

Vetiver Wastewater Treatment / Disposal, & Carbon Sequestration

Chemical Engineering Research

Award Winning Research (Australian Water Association)

School of Engineering, Edith Cowan University, 270 Joondalup Drive, Joondalup, Perth, WA 6027, Australia



Fig. 1: Root biomass



Fig. 2: Lysimeter transport

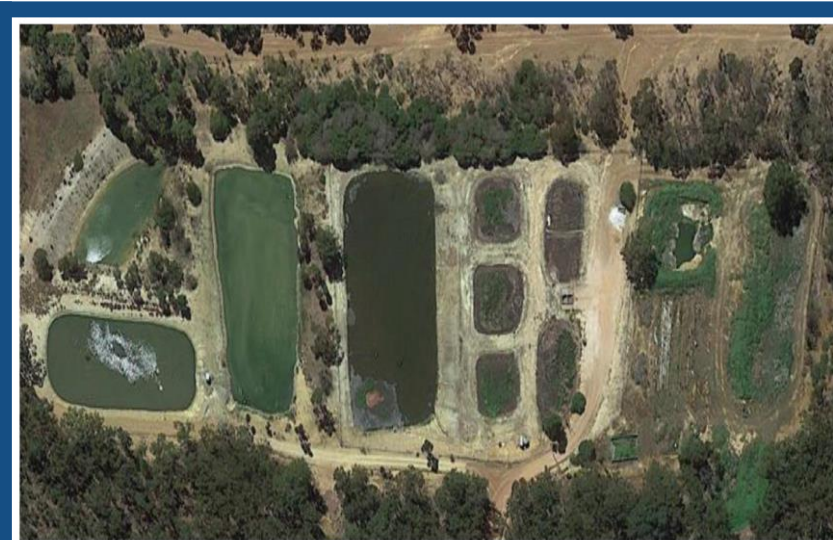


Fig. 3: LWFT near Bunbury

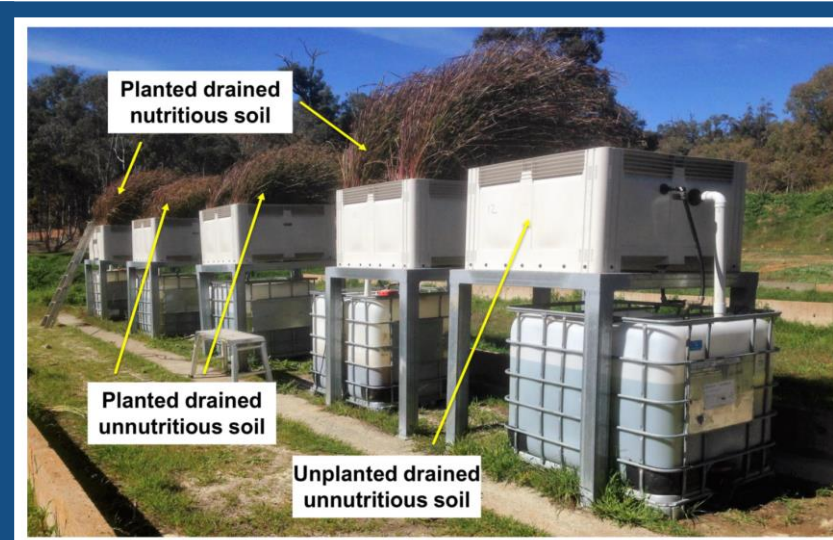


Fig. 4: LWTF wastewater

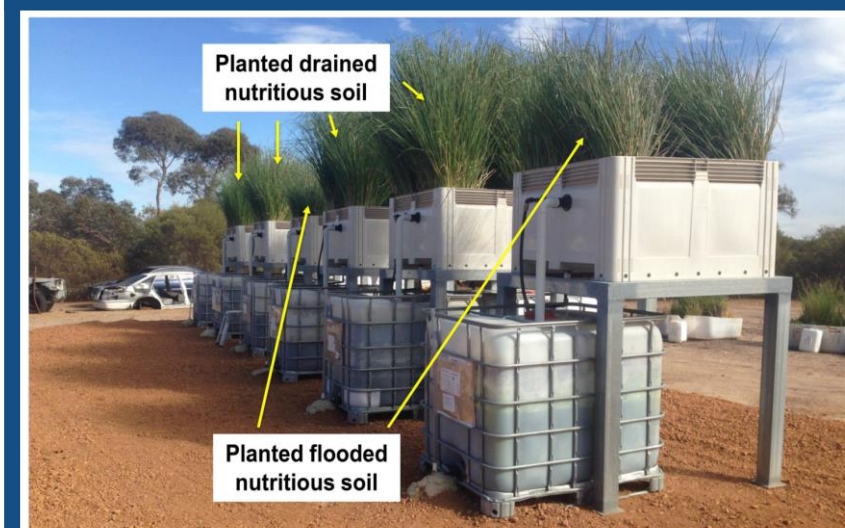


Fig. 6: Red Hill landfill

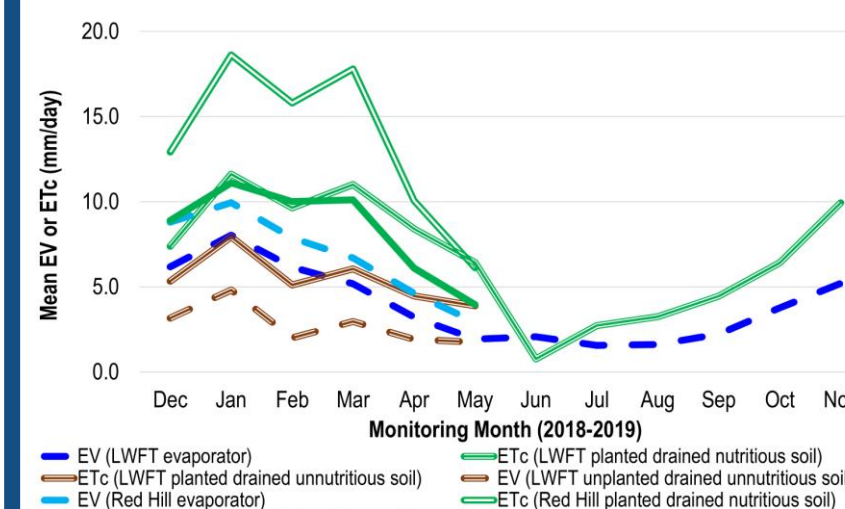


Fig. 8: Various ET rates

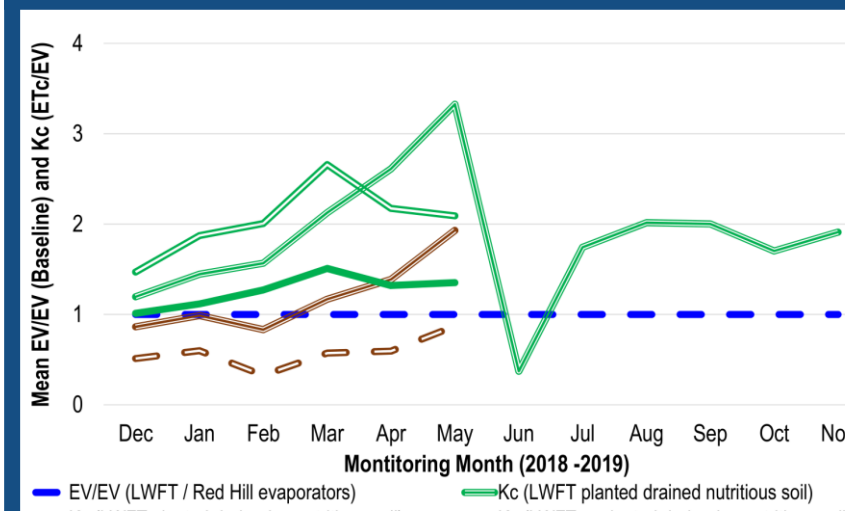


Fig. 9: Various Kc



Fig. 11: Leachate irrigation

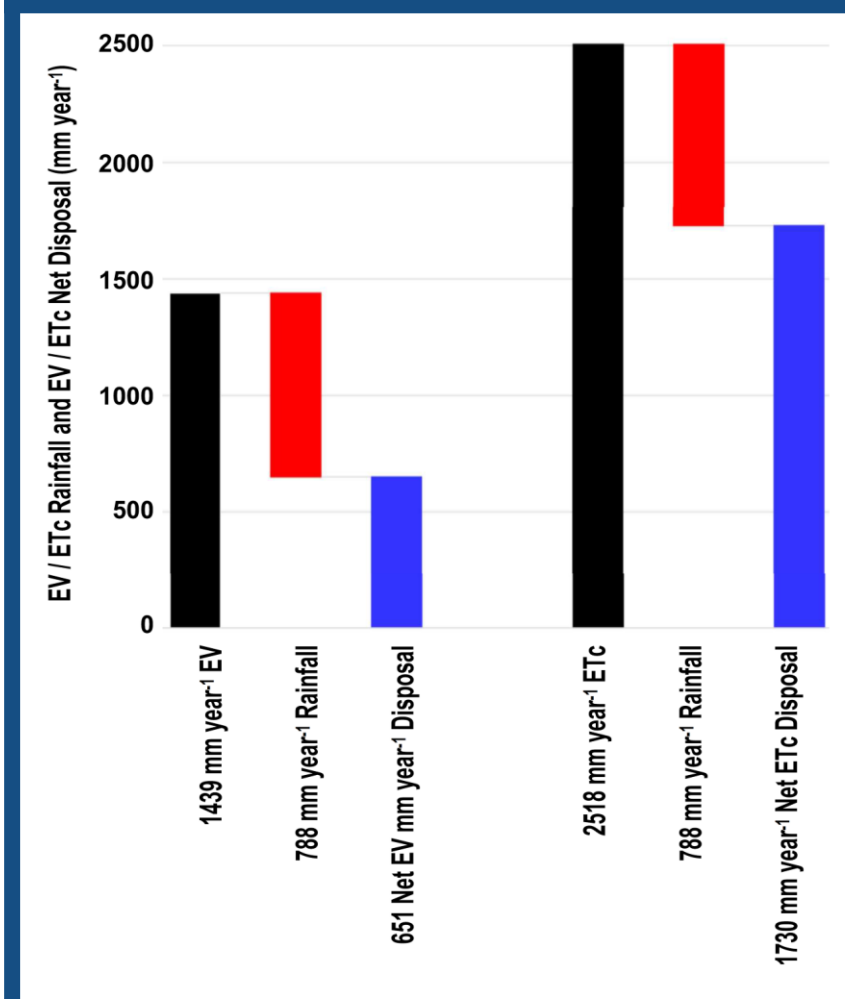


Fig. 13: Net ET disposal

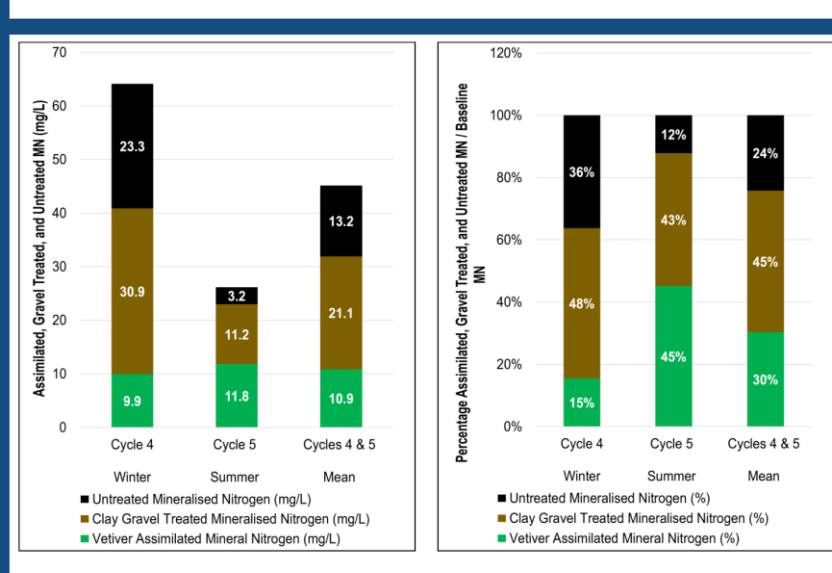


Fig. 14: N treatment

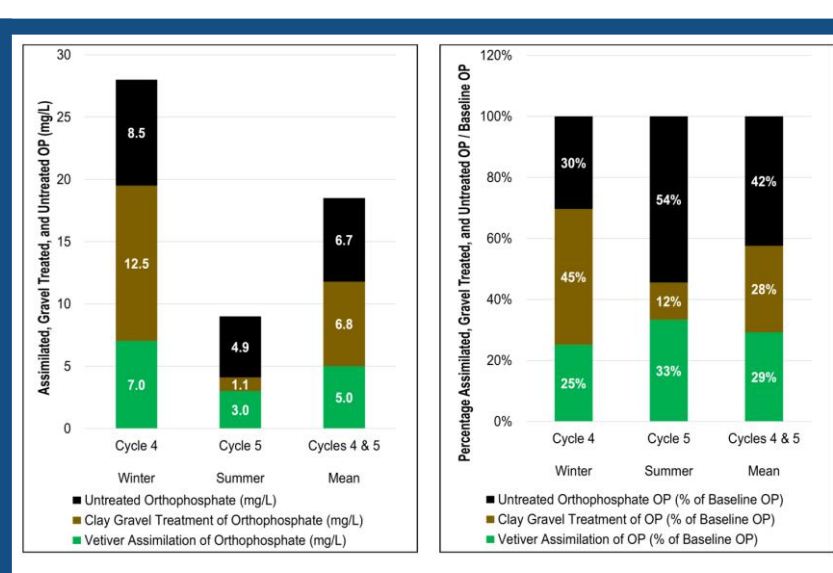


Fig. 15: P treatment

Country	Australia	New Zealand	France	Finland	Luxembourg	Indonesia
Pricing Mechanism (The World Bank, 2017)	None Reported	Emissions Trading Scheme	Carbon Tax	Carbon Tax	Carbon Tax	Emissions Trading Scheme
USD per tCO ₂ e (The World Bank, 2021)	\$14	\$26	\$52	\$73	\$101	\$137
AUD per tCO ₂ e (The World Bank, 2021)	\$20	\$36	\$73	\$102	\$142	\$192
Dry Root Yield (DRY) 172 t ha ⁻¹ year ⁻¹	\$2,320	\$4,183	\$8,508	\$11,828	\$16,479	\$22,291
Total Dry Yield (TDY) 253 t ha ⁻¹ year ⁻¹	\$3,440	\$6,203	\$12,616	\$17,537	\$24,434	\$33,052
Income ha ⁻¹ year ⁻¹ (Gill, 2019)	\$5,760	\$10,386	\$21,124	\$29,365	\$40,913	\$55,343
Profit ha ⁻¹ year ⁻¹ (Gill, 2019)	\$334					

Fig. 16: C sequestration

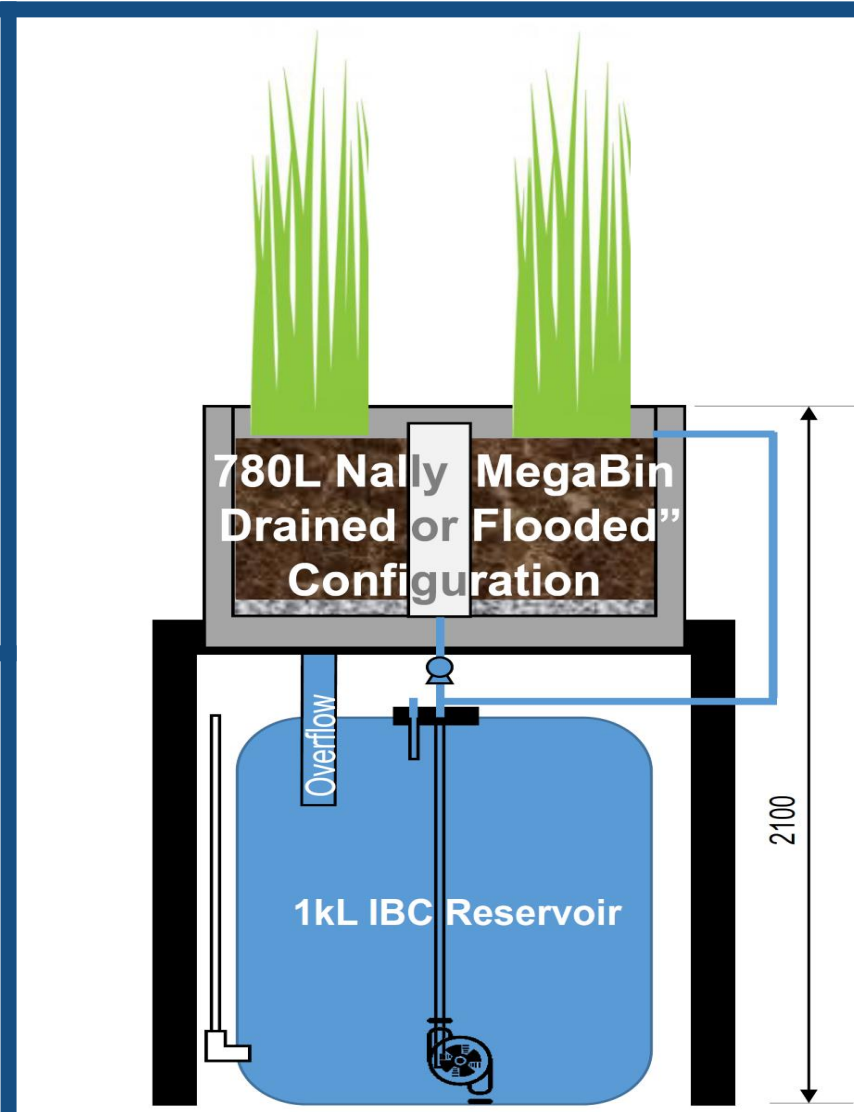


Fig. 5: Rig design

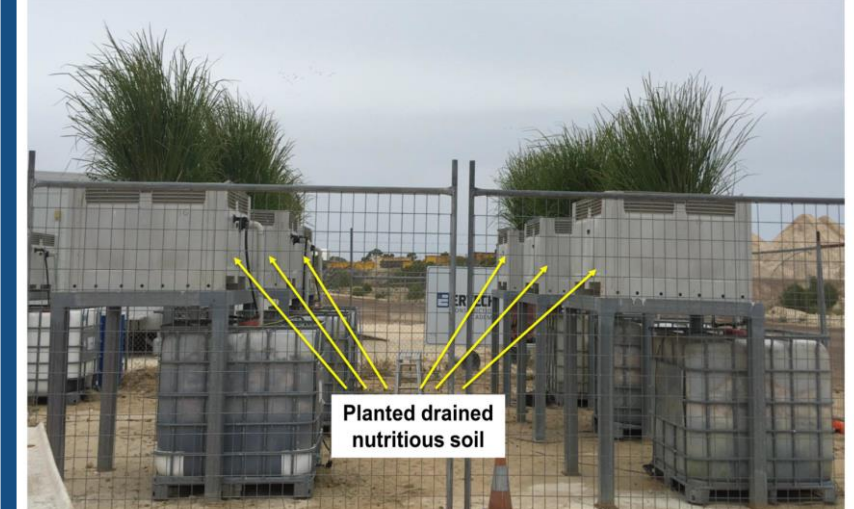


Fig. 7: Tamala Park landfill

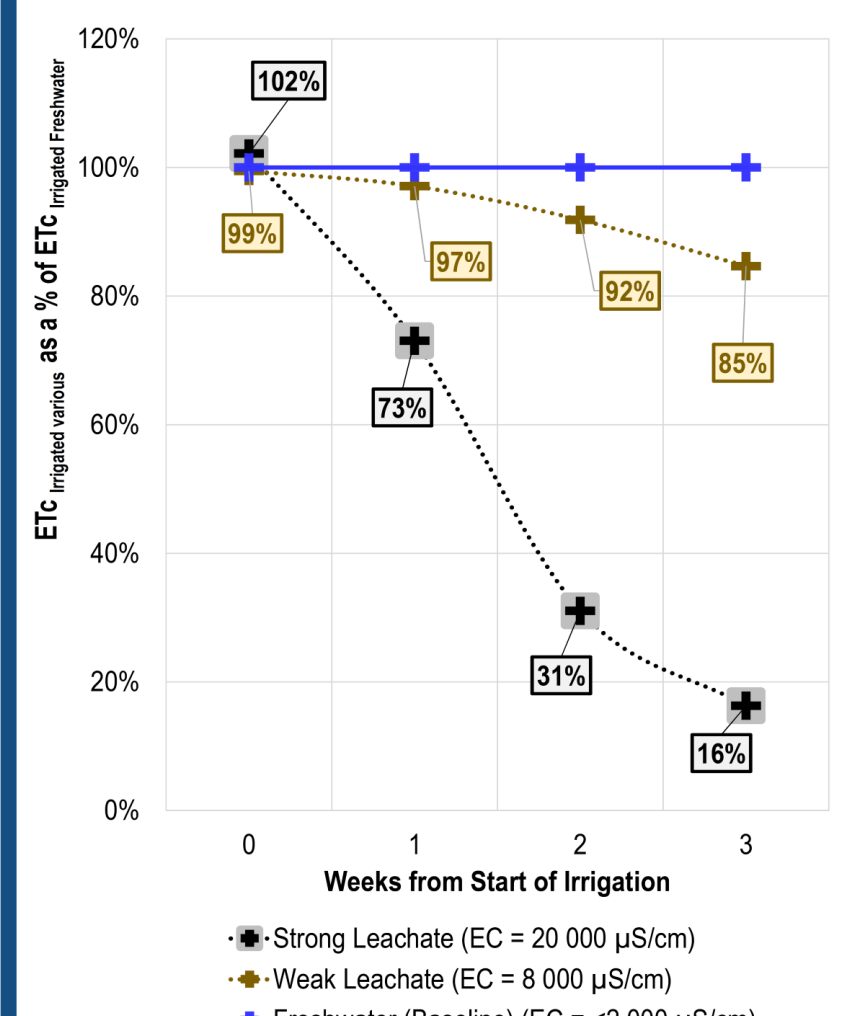


Fig. 10: Leachate ET rates

Parameter	Nutritious Soil (Standard Soil 1)	LWF Biosolids Soil 7
Soil Type (Drained)	Nutritious Soil (Standard Soil 1)	LWF Biosolids Soil 7
Dry Shoot Yield (DSY)	66 t ha ⁻¹ year ⁻¹ (Red Hill NMB Study)	101 t ha ⁻¹ year ⁻¹ (154% Soil 1 LWF Pot Study)
Dry Root Yield (DRY)	44 t ha ⁻¹ year ⁻¹ (LWF Pot Study)	67 t ha ⁻¹ year ⁻¹ (154% Soil 1 LWF Pot Study)
Total Dry Yield (TDY)	110 t ha ⁻¹ year ⁻¹ (DSY + DRY)	169 t ha ⁻¹ year ⁻¹ (154% Soil 1 LWF Pot Study)

Fig. 12: Dry yield studies

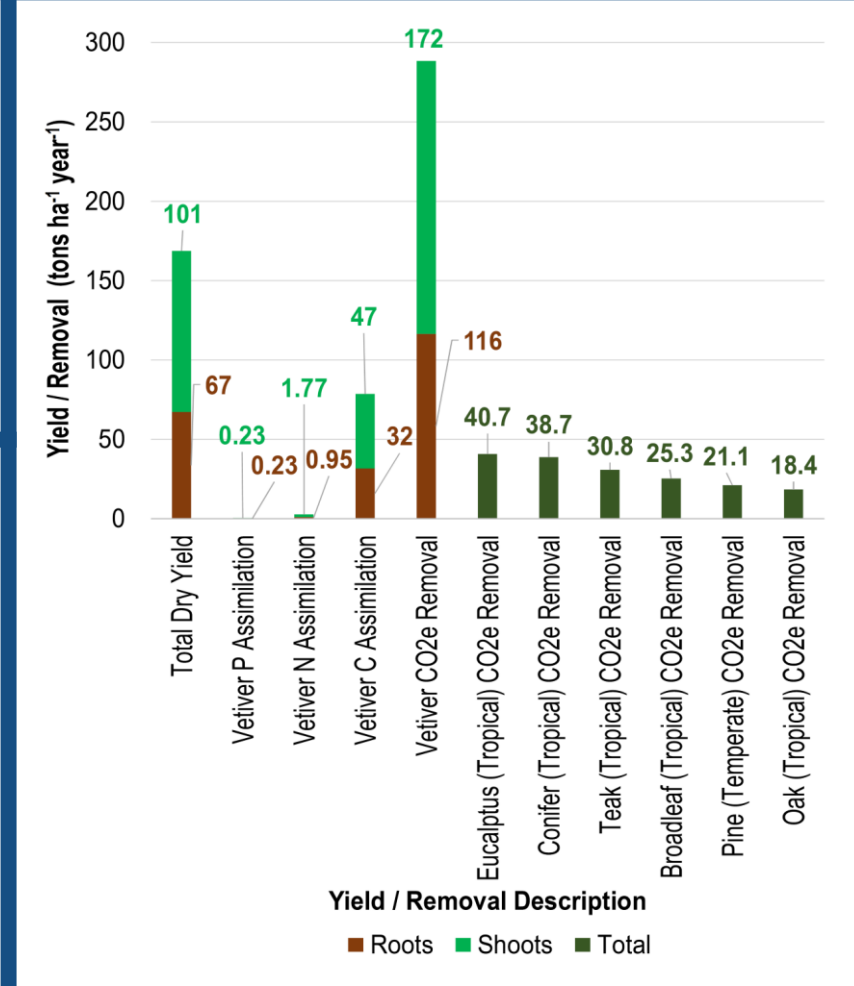


Fig. 17: Assimilation

Funding Bodies: Australian Government Research Training Program Scholarship, City of Armadale, City of Busselton, Cleanaway Pty Ltd, Cockburn City Council, Eastern Metropolitan Regional Council, Lennard Waste PTY LTD, Mindarie Regional Council, Suez Recycling & Recovery Pty Ltd
Project Team: Simeon Kendall, A/Prof Mehdi Khadani, A/Prof Guangzhi Sun, Dr Tusha Sen, Ian Watkins, Anesu Mpenyu, Jeswin Lovin Jose
Email: simeon@hseControl.com.au, m.khadani@ecu.edu.au